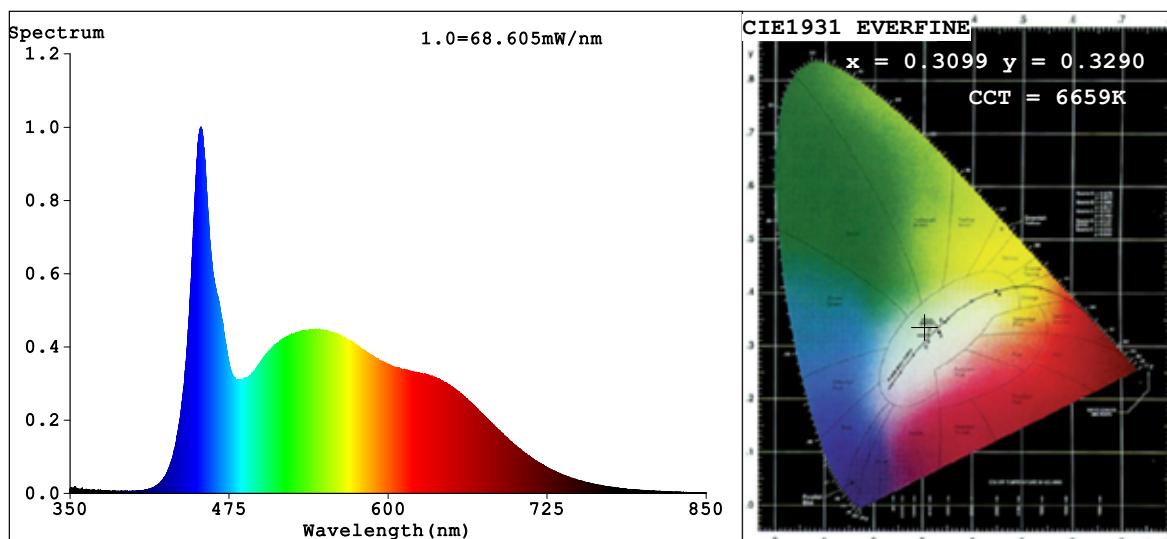


## Spectrum Test Report



### Color Parameters:

Chromaticity Coordinate:  $x=0.3099$   $y=0.3290$   $u'=0.1959$   $v'=0.4679$   
 CCT=6659K (Duv=0.0046) Dominant WL:Ld =489.3nm Purity=8.2%  
 Ratio:R=14.4% G=79.0% B=6.6%; Peak WL:Lp=452.9nm FWHM=24.2nm  
 Render Index:Ra=92.1 CRI=88.4 TM30:Rf=89 Rg=98  
 R1 =92 R2 =95 R3 =95 R4 =90 R5 =90 R6 =90 R7 =96  
 R8 =90 R9 =72 R10=86 R11=89 R12=64 R13=93 R14=97 R15=91

### Photo Parameters:

Flux = 2001 lm Eff. : 104.89 lm/W Fe = 7.308 W

### Electrical parameters:

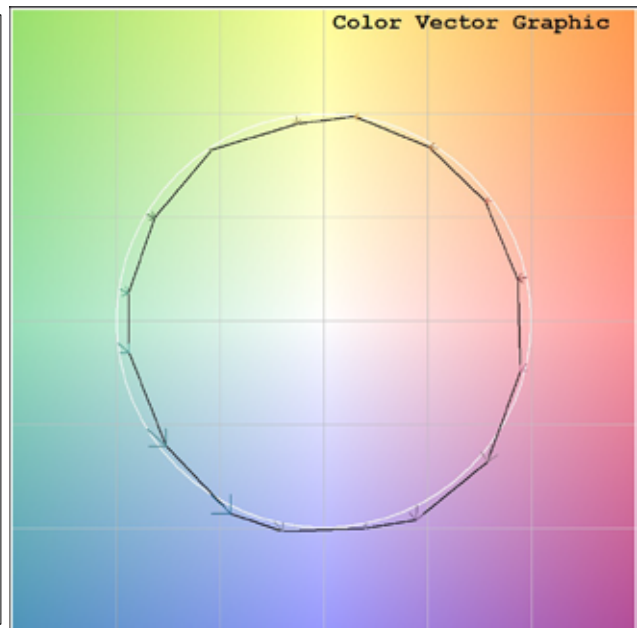
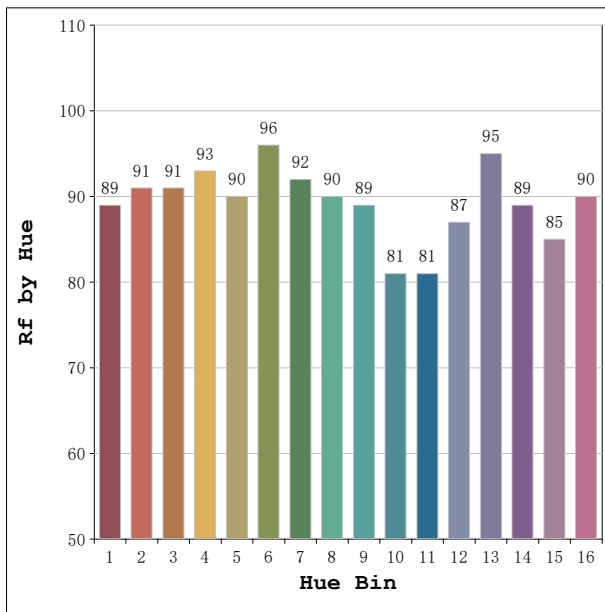
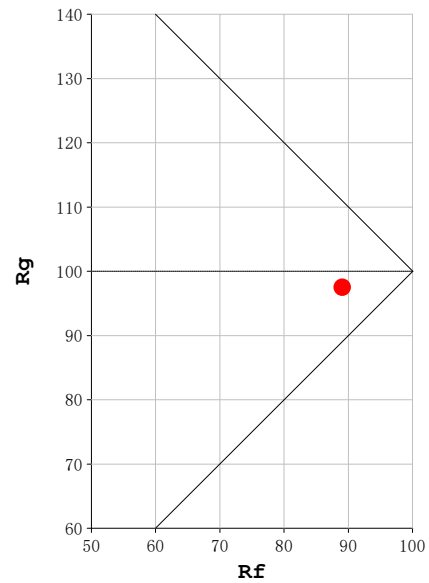
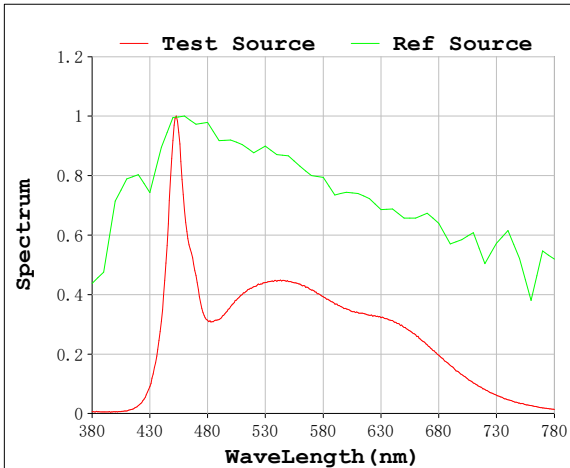
V = 23.998 V I = 0.7949 A P = 19.08 W PF = 1.000

Status: Integral T = 500 ms Ip = 42193 (64%)

Model:Ecoled Barcelona Pro  
 Tester:Sergio Carneros  
 Temperature:27Deg  
 Manufacturer:Luz Negra S.L.

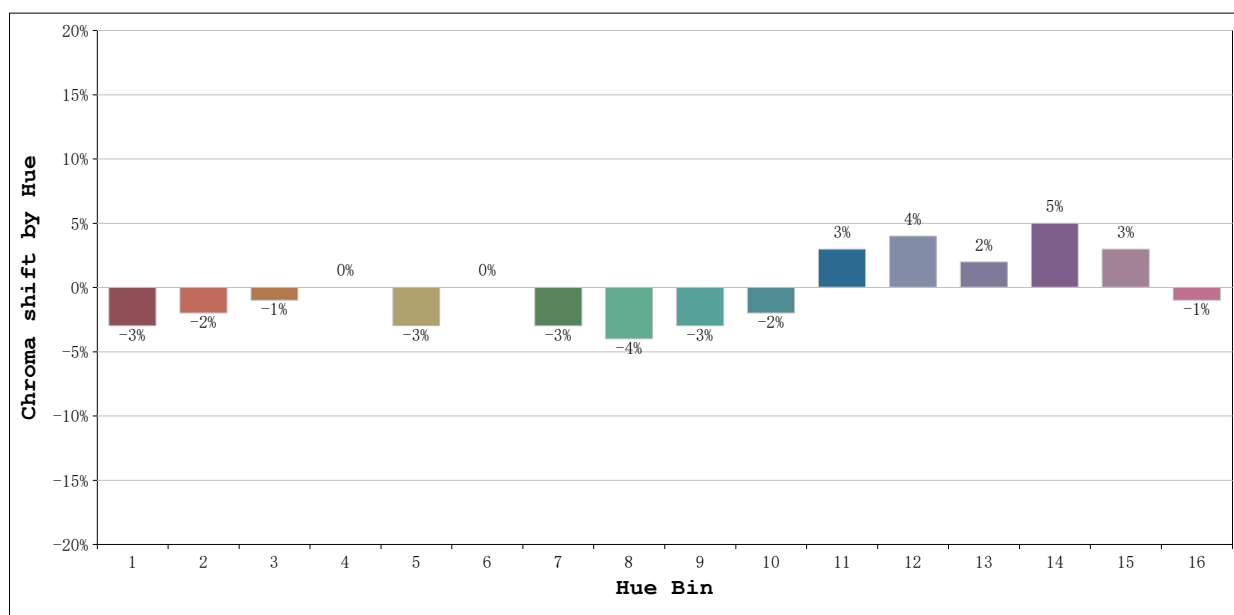
Number: 32.082  
 Date:2026-06-02 08:28:24  
 Humidity:35%  
 Remarks:100cm de tira flexible

**Rf: 89**      **CCT: 6659 K**      **u': 0.1959**  
**Rg: 98**      **Duv: 0.0046**      **v': 0.4679**



**Model:**Ecoled Barcelona Pro  
**Tester:**Sergio Carneros  
**Temperature:**27Deg  
**Manufacturer:**Luz Negra S.L.

**Number:** 32.082  
**Date:**2026-06-02 08:28:24  
**Humidity:**35%  
**Remarks:**100cm de tira flexible



			Graphic shift(%)	
Hue Bin	Hue Angle	Rf	Chroma	Hue
1	0.0° - 22.5°	89	-3	0
2	22.5° - 45.0°	91	-2	2
3	45.0° - 67.5°	91	-1	4
4	67.5° - 90.0°	93	0	4
5	90.0° - 112.5°	90	-3	0
6	112.5° - 135.0°	96	0	0
7	135.0° - 157.5°	92	-3	0
8	157.5° - 180.0°	90	-4	1
9	180.0° - 202.5°	89	-3	5
10	202.5° - 225.0°	81	-2	12
11	225.0° - 247.5°	81	3	13
12	247.5° - 270.0°	87	4	5
13	270.0° - 292.5°	95	2	0
14	292.5° - 315.0°	89	5	-4
15	315.0° - 337.5°	85	3	-7
16	337.5° - 360.0°	90	-1	-3

**Model:**Ecoled Barcelona Pro  
**Tester:**Sergio Carneros  
**Temperature:**27Deg  
**Manufacturer:**Luz Negra S.L.

**Number:** 32.082  
**Date:**2026-06-02 08:28:24  
**Humidity:**35%  
**Remarks:**100cm de tira flexible